

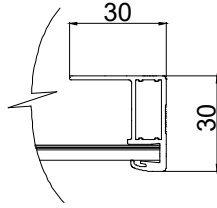


## MITTAKUVAT (mm)

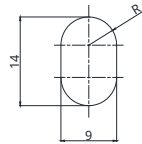
### Näkymä takaa



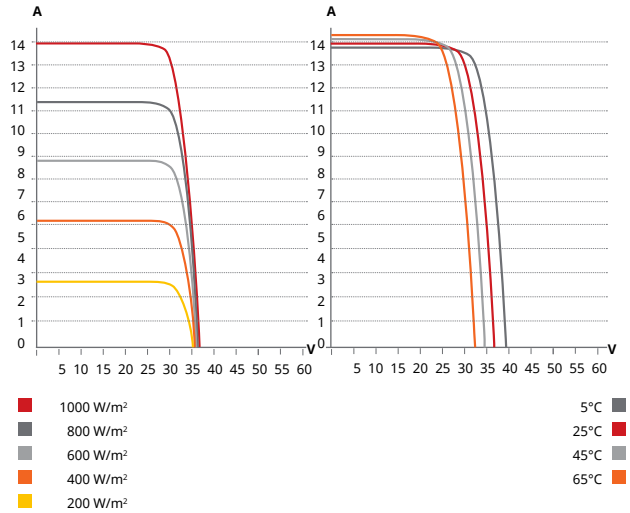
### Kehyksen poikkileikkaus A-A



### Kiinnitysreikä



## CS6R-405MS / I-V KUVAAJAT



## Sähkö tiedot | STC\*

CS6R	395MS	400MS	405MS	410MS	415MS	420MS
Nominal Max. Power (Pmax)	395 W	400 W	405 W	410 W	415 W	420 W
Opt. Operating Voltage (Vmp)	30.6 V	30.8 V	31.0 V	31.2 V	31.4 V	31.6 V
Opt. Operating Current (Imp)	12.91 A	12.99 A	13.07 A	13.15 A	13.23 A	13.31 A
Open Circuit Voltage (Voc)	36.6 V	36.8 V	37.0 V	37.2 V	37.4 V	37.6 V
Short Circuit Current (Isc)	13.77 A	13.85 A	13.93 A	14.01 A	14.09 A	14.17 A
Module Efficiency	20.2%	20.5%	20.7%	21.0%	21.3%	21.5%
Operating Temperature	-40°C ~ +85°C					
Max. System Voltage	1500V (IEC) tai 1000V (IEC)					
Module Fire Performance	CLASS C (IEC 61730)					
Max. Series Fuse Rating	25 A					
Application Classification	Class A					
Power Tolerance	0 ~ + 10 W					

\* Under Standard Test Conditions (STC) of irradiance of 1000 W/m<sup>2</sup>, spectrum AM 1.5 and cell temperature of 25°C.

## MECHANICAL DATA

Specification	Arvo
Kennotyyppi	Monokide
Kennojärjestys	108 [2 X (9 X 6)]
Mitat	1722 x 1134 x 30 mm (67.8 x 44.6 x 1.18 in)
Paino	21.3 kg (47.0 lbs)
Etupuoli	3.2 mm karkaistu heijastamaton lasi
Kehys	Anodisoitu alumiini
Kytkentärasia	IP68, 3 bypass diodia
Kaapeli	4 mm <sup>2</sup> (IEC)
Liitin	MC4 tai MC4-EVO2
Kaapelin pituus (sisältää liittimen)	Portrait: 410 mm (16.1 in) (+) / 290 mm (11.4 in) (-); vaakatasossa: 1100 mm (43.3 in)*
Lavalla	35 kappaletta
Kontissa (40' HQ)	910 kappaletta

\* For detailed information, please contact your local Canadian Solar sales and technical representatives.

## SÄHKÖTIEDOT | NMOT\*

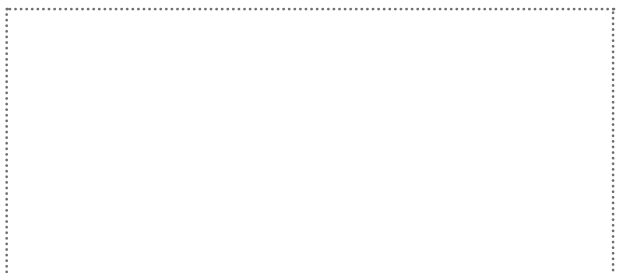
CS6R	395MS	400MS	405MS	410MS	415MS	420MS
Nominal Max. Power (Pmax)	296 W	300 W	304 W	307 W	311 W	315 W
Opt. Operating Voltage (Vmp)	28.7 V	28.9 V	29.1 V	29.2 V	29.4 V	29.6 V
Opt. Operating Current (Imp)	10.33 A	10.39 A	10.45 A	10.52 A	10.58 A	10.65 A
Open Circuit Voltage (Voc)	34.6 V	34.8 V	35.0 V	35.1 V	35.3 V	35.5 V
Short Circuit Current (Isc)	11.09 A	11.15 A	11.21 A	11.28 A	11.34 A	11.41 A

\* Under Nominal Module Operating Temperature (NMOT), irradiance of 800 W/m<sup>2</sup>, spectrum AM 1.5, ambient temperature 20°C, wind speed 1 m/s.

## LÄMPÖMINAISUUDET

Erittely	Arvo
Temperature Coefficient (Pmax)	-0.34 % / °C
Temperature Coefficient (Voc)	-0.26 % / °C
Temperature Coefficient (Isc)	0.05 % / °C
Nominal Module Operating Temperature	41 ± 3°C

## MAAHANTUOJA



\* The specifications and key features contained in this datasheet may deviate slightly from our actual products due to the on-going innovation and product enhancement. CSI Solar Co., Ltd. reserves the right to make necessary adjustment to the information described herein at any time without further notice.

Please be kindly advised that PV modules should be handled and installed by qualified people who have professional skills and please carefully read the safety and installation instructions before using our PV modules.